



**CREATE  
WORK  
INSPIRE**

- ROCKER SWITCH
- PUSH BUTTON SWITCH
- INDICATORS
- CONSULTANCY
- MOULD MAKING



**Astron Switch Craft** is a renowned manufacturer of **Rocker Switches, Push Button Switches, Indicators and Customised Electromechanical products** in India. Our strong presence in the market is the result of ability to design and manufacture products as per customer's requirements considering international norms and at a very competitive price.

# ROCKER SWITCHES

## Technical Information

|                                   |                           |                  |
|-----------------------------------|---------------------------|------------------|
| Contact Resistance                | <10 Milli Ohms            |                  |
| Insulation Resistance             | >100 Mega Ohms            |                  |
| Di-Electric Strength              | Across Full Disconnection | 1250V            |
| Circuit Isolation                 | ≥3mm                      |                  |
| Electrical Endurance              | 10,000 Cycles             |                  |
| Degree Of Protection              | IP 40                     | Ref. IEC 61058-1 |
| Protection Against Electric Shock | Class II Appliance        | Ref. IEC 61058-1 |
| Glow Wire Test                    | Level '1' 650 C           | Ref. IEC 61058-1 |
| Degree Of Pollution               | Normal                    | Ref. IEC 61058-1 |
| Proof Of Tracking Index           | PTI 250 V                 | Ref. IEC 61058-1 |
| Temperature Rise At The Terminals | Max 55K*                  | Ref. IEC 61058-1 |

## Material Of Construct

|          |   |
|----------|---|
| Housing  | Nylon 66<br>Flammability UL 94, V-2                 |
| Rocker   | Nylon 66 / Polycarbonate<br>Flammability UL 94, V-2 |
| Terminal | Copper / Copper Alloy                               |
| Contacts | Silver Alloy / Bimetal / Copper                     |

## Types

|     |                   |
|-----|-------------------|
| N   | - Non Illuminated |
| IL  | - Illuminated     |
| DL  | - Dot Illuminated |
| IND | - Indicator       |

## Colours

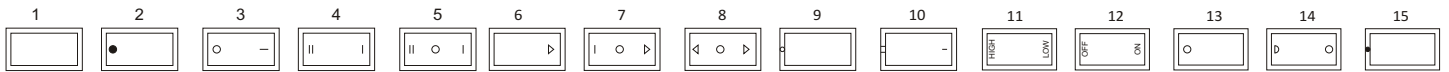
| Housing   | Cap         |
|-----------|-------------|
| Black - B | Black - B*  |
| White - W | Red - R*#   |
| Grey - Gr | Green - G#  |
|           | Amber - A#  |
|           | Blue - Bl*# |
|           | Grey - Gr*  |
|           | White - W*  |

\* - Non Illuminated  
# - Illuminated

## Functions

| Code | Circuit Function  | Function                                       |
|------|-------------------|--|
| S    | ON - OFF          | Single Throw                                   |
| D    | ON - ON           | Double Throw                                   |
| SM   | (ON) - OFF        | Single Pole Spring Return                      |
| C    | ON - OFF - ON     | Center Off With Both Side On                   |
| C1   | ON - OFF - (ON)   | Center Off With Spring Return In One Position  |
| C2   | (ON) - OFF - (ON) | Center Off With Spring Return In Both Position |
| IND  | INDICATOR         | Indication                                     |
| NO   | OFF - (ON)        | Momentary On                                   |
| NC   | (ON) - OFF        | Momentary Off                                  |

## Printing Option



## Ordering System

| Series | Rating | Type | Function | Color (Body/Cap) | Printing |
|--------|--------|------|----------|------------------|----------|
|--------|--------|------|----------|------------------|----------|

Example: AS 503 NS-B / R-03, Series AS-5, 03A, Non Illuminated, Single Throw, Black Body / Red Cap with Printing Option

### AS - 1



Function : DPST, DPDT, Momentary, Indicator, C-Off  
Type : Illuminated / Non Illuminated  
Rating : 16/06 A, 250V AC  
Cut Out Size : 22 mm X 30 mm

### AS - 2



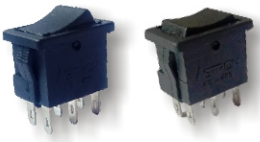
Function : SPST, SPDT, C-Off  
Type : Illuminated / Non-Illuminated  
Rating : 16/06 A, 250V AC  
Cut Out Size : 11 mm X 30 mm

### AS - 4



Function : DPST  
Type : Illuminated / Non-Illuminated  
Rating : 10/06/04 A, 250 V AC  
Cut Out Size : 12.9 mm X 19.2 mm

### AS - 4 ND



Function : DPDT, C-OFF  
Type : Non-Illuminated  
Rating : 02 A, 250 V AC  
Cut Out Size : 12.9 mm X 19.2 mm

### AS - 5



Function : SPST, SPDT, C-Off, Momentary, Indicator  
Type : Illuminated / Non-Illuminated  
Rating : 10/06/03/02 A, 250 V AC  
Cut Out Size : 12.9 mm X 19.2 mm

### ARS - 5



Function : SPST, SPDT, C-Off  
Type : Illuminated / Non-Illuminated  
Rating : 10/06/03/02 A, 250 V AC  
Cut Out Size : Ø20 mm

### AS - 6



Function : SPST, SPDT, C-OFF  
Type : Non Illuminated  
Rating : 02 A, 250 V AC  
Cut Out Size : 9 mm X 14 mm

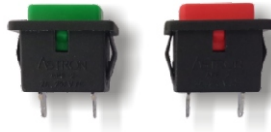
# PUSH BUTTON SWITCHES

APS - 1



Function : SPST Momentary ON  
Cap Color : Red, Green, Yellow, Blue  
Rating : 0.2 A, 250V AC  
Cut Out Size : Ø12 mm

APS - 2



Function : SPST Momentary ON  
Cap Color : Red, Green, Yellow, Blue  
Rating : 02 A, 250 V AC  
Cut Out Size : 12.9 mm X 19.10 mm

APS - 3



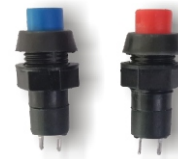
Function : SPST Momentary OFF  
(Plunger available in 2 different size)  
Rating : 0.5 A, 250 V AC  
Cut Out Size : Ø19 mm

APS - 4



Function : SPST (Push to ON Push to OFF)  
Rating : 10 A, 250 V AC  
Locking Pitch : 23 mm

APS - 5



Function : SPST (Push to ON Push to OFF), Momentary ON  
Cap Color : Red, Green, Yellow, Blue  
Rating : 02 A, 250 V AC  
Cut Out Size : Ø 12 mm

# INDICATORS

## Material Of Construct

|          |                          |
|----------|--------------------------|
| Body     | Nylon 66 / Polycarbonate |
| Cap      | Polycarbonate            |
| Terminal | Brass                    |

AS - 1 INDICATOR



Rating : 250 V AC  
Cap Color : Red, Green, Amber  
Housing Color : Black /White  
Cut Out Size : 22 mm X 30 mm

AS - 5 INDICATOR



Rating : 250 V AC  
Cap Color : Red, Green, Amber & Blue  
Housing Color : Black / White  
Cut Out Size : 12.9 mm X 19.2 mm

ARS - 5 INDICATOR



Rating : 250 V AC  
Cap Color : Red, Green, Amber  
Housing Color : Black  
Cut Out Size : Ø20 mm

AI - 10 INDICATOR



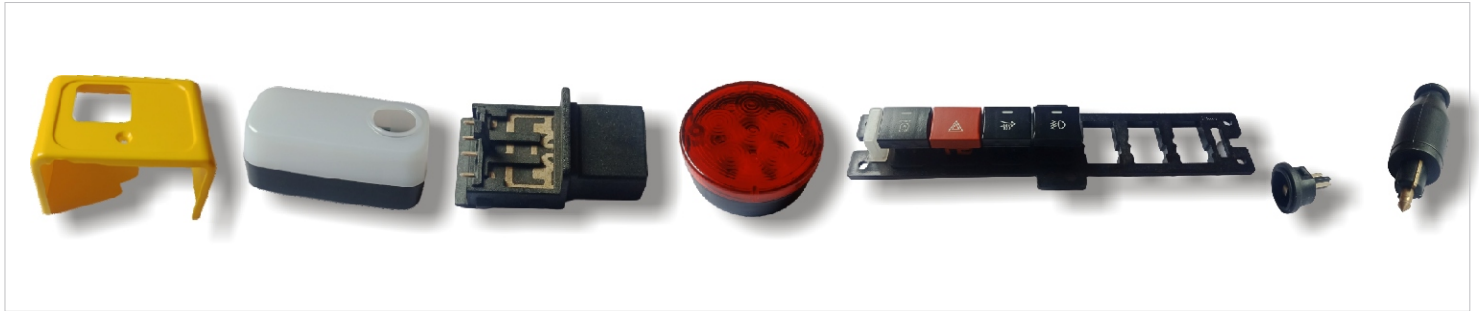
Rating : 250 V AC  
Color : Red, Green, Amber  
Cut Out Size : Ø 9.70 mm with anti rotation slot

AI - 16 INDICATOR

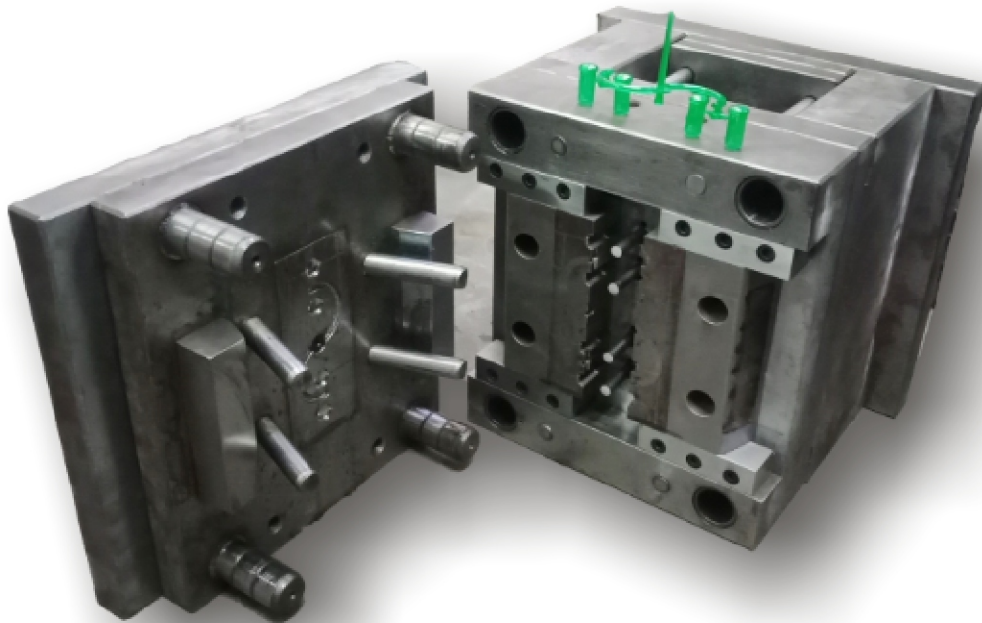


Rating : 250 V AC  
Cap Color : Red, Green, Amber & Blue  
Housing Color : Black  
Cut Out Size : Ø 16 mm

## CUSTOMISED PLASTIC / METAL COMPONENTS



## CUSTOMISED INJECTION MOULDS



**ASTRON**  
SWITCH CRAFT  
An ISO 9001:2015 Certified Company

### Corporate Office :

Sub Plot No 16, Final Plot No 106  
Ramtekdi Industrial Estate, Hadapsar, Pune - 411013  
Maharashtra. INDIA.

Tel : + 91 - 9822249240, 9225680637

Email : sales@astron-in.com

astronswitch@gmail.com

Website : [www.astron-in.com](http://www.astron-in.com)

