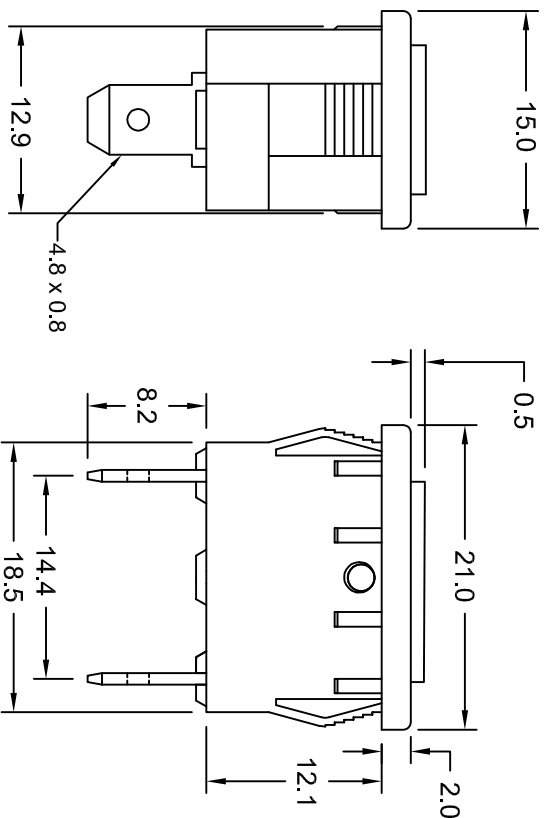
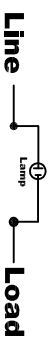


## AS 5 INDICATOR SWITCH



### Indicator Electrical Circuit Diagram



### Approvals

**CE** - As per IEC / EN 61058 - 1

Reference Standards : IEC / EN 61058 - 1  
UL - 1054

Body Colour	Rocker Colour
Black	Red
White	Amber
Grey	Green
	Blue

### MATERIAL OF CONSTRUCTION

**BODY** : Nylon 66 ( Unfilled )  
Flammability UL 94 V-2

**ROCKER** : Polycarbonate  
Flammability UL 94 V-2

**CONTACTS** : Silver / Silver Alloy  
Copper

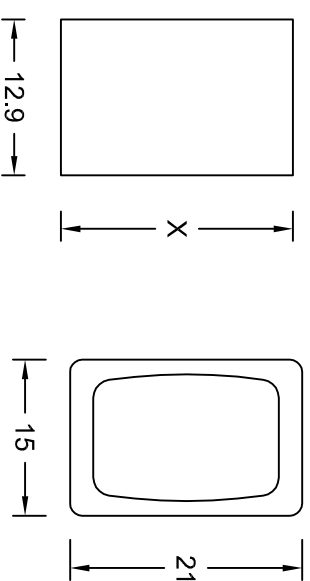
**TERMINALS** : Copper / Copper Alloy

**SPRING** : Stainless Steel

**RoHS Compliant**

### PANEL CUT-OUT SIZE

### BEZEL



### DIMENSIONS FOR SNAP - IN MOUNTING

PANEL THICKNESS	DIMENSION X
0.75 - 1.25	19.2
1.25 - 2.00	19.4
2.00 - 3.00	19.8

\* Panel Cut-outs must be punched in the direction of insertion

### PRINTING OPTIONS

### RATING

250V AC

\* Customized Printing options available on request

# Astron Switch Craft